
MASABA®

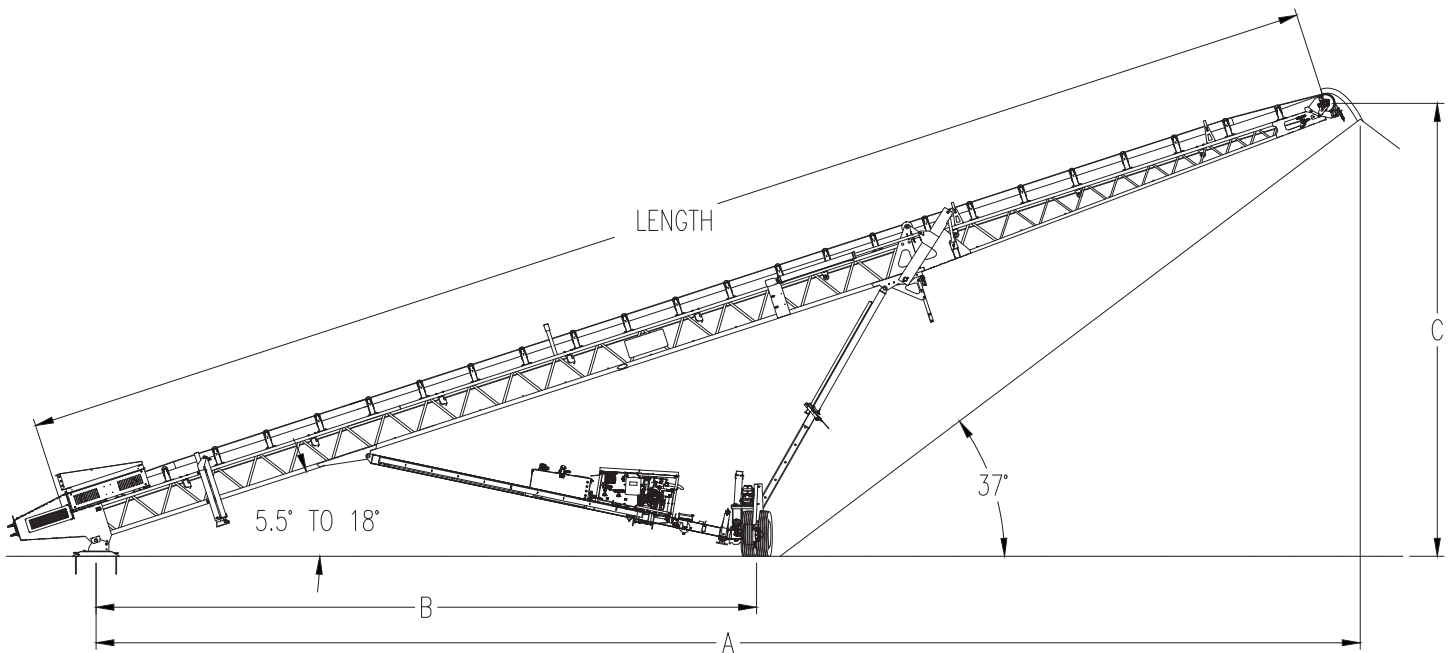


SELF-CONTAINED RADIAL STACKERS

Designed and built entirely by Masaba, our road- and pit-portable Self-Contained Hydraulic Radial Stackers run under their own power, thanks to a 72 HP Yanmar onboard diesel-powered hydraulic unit.



WWW.MASABAINC.COM | 877-627-2220



Belt Width	36"	
Max Capacity	500 TPH	
Length	80'	100'
Dimension "A"	77' 8"	93' 4"
Dimension "B"	40' 11"	48' 10"
Dimension "C"	27' 5"	33' -9"

Stockpile Capacity		
Conveyor Length	80'	100'
Pile Height	27'6"	32'6"
Arc Radius of Pile	77'	96'6"
Base Diameter of Pile	73'	86'
Conical Pile Capacity	1,918 Tons	3,146 Tons
	1,421 C.Y.	2,331 C.Y.
Total Capacity including ends @ 45° Arc	3,321 Tons	5,859 Tons
	2,452 C.Y.	4,324 C.Y.
Total Capacity including ends @ 90° Arc	7,993 Tons	14,068 Tons
	5,921 C.Y.	10,421 C.Y.
Total Capacity including ends @ 180° Arc	13,766 Tons	24,386 Tons
	10,215 C.Y.	18,099 C.Y.

NOTE: SPECIFICATIONS ARE SUBJECT TO CHANGE WITHOUT NOTICE: Because Masaba, Inc. may use in its catalog and literature, field photographs of its products that may have been modified by the owners, products furnished by Masaba, Inc. may not necessarily be as illustrated therein. Additionally, continuous design progress makes it necessary that specifications be subject to change without notice. All sales of the products of Masaba, Inc. are subject to the provisions of its standard warranty. Masaba, Inc. does not guarantee or represent that its products meet any federal, state or local statutes, codes, ordinances, rules, standards, or other regulations, including OSHA and MSHA, covering safety, pollution, electrical, wiring, etc. Compliance with these statutes and regulations is the responsibility of the owner and will be dependent upon the areas in and the use to which the product is put by the user. In some photographs, guards may have been removed for illustrative purposes only. This equipment should not be operated without all guards attached in their normal position. Placement of guards and safety equipment is often dependent upon the area in and the use to which the product is put. A safety study should be made by the user of the application, and, if required, additional guards, warning signs, and other safety devices should be installed by the user, wherever appropriate, before operating the products.