

MASABA®

ROLL-OFF & STACKABLE CONVEYORS



* Appropriate guarding supplied. We do not guarantee that our guards will meet all local codes. It is the owner's responsibility to have them checked by a local inspector.



Product Features

- » Quick and safe transition from transport to operation
- » No crane required for Roll-Off Conveyors
- » Freight-friendly efficiency
- » Available in 2-Pack or 3-Pack
- » Customizable options available

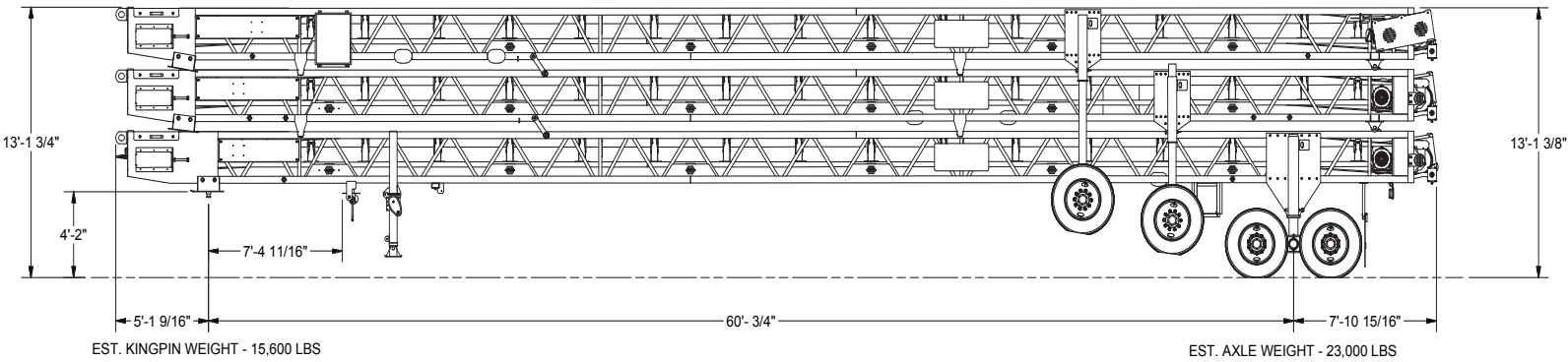


Scan QR code for more information

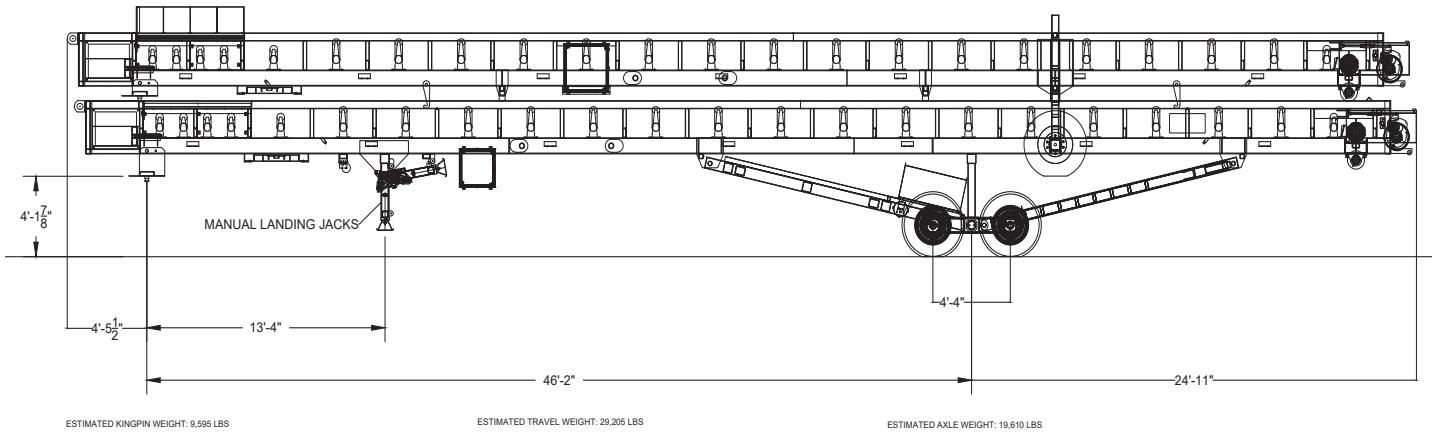


Contact us today!
sales@masabainc.com
877.627.2220

3-PACK



2-PACK



Conveyor Dimension	Configuration	Max. Discharge Height Bottom Conveyor	Max. Discharge Height Middle & Top Conveyors
36" x 60'	3-Pack	15'	10'6"
36" x 70'	3-Pack	15'	10'6"
36" x 80'	3-Pack	15'	10'6"
48" x 70'	2-Pack	21'	10'6"

NOTE: SPECIFICATIONS ARE SUBJECT TO CHANGE WITHOUT NOTICE: Because Masaba, Inc. may use in its catalog and literature, field photographs of its products that may have been modified by the owners, products furnished by Masaba, Inc. may not necessarily be as illustrated therein. Additionally, continuous design progress makes it necessary that specifications be subject to change without notice. All sales of the products of Masaba, Inc. are subject to the provisions of its standard warranty. Masaba, Inc. does not guarantee or represent that its products meet any federal, state or local statutes, codes, ordinances, rules, standards, or other regulations, including OSHA and MSHA, covering safety, pollution, electrical, wiring, etc. Compliance with these statutes and regulations is the responsibility of the owner and will be dependent upon the areas in and the use to which the product is put by the user. In some photographs, guards may have been removed for illustrative purposes only. This equipment should not be operated without all guards attached in their normal position. Placement of guards and safety equipment is often dependent upon the area in and the use to which the product is put. A safety study should be made by the user of the application, and, if required, additional guards, warning signs, and other safety devices should be installed by the user, wherever appropriate, before operating the products.

ROS-0724