

MASABA



www.masabainc.com

Portable Bin Feeder

Portable 25 Ton Surge Bin

Main Frame and Chassis

- Single Axle Chassis
- Heavy Duty Wide Flange Beam Frame
- (8) 11 x 22.5R radial tires
- Brakes
- Lights
- Mudflaps

Hopper

- Volume: **22 cubic yards**
- Constructed from 1/4" mild steel
- 3/8" AR Liners
- 8" x 8" x 3/4" Angle Baffle
- Adjustable gate with Manual Crank
- Square tube supports to chassis

Syntron Vibratory Feeder

- Model: MF-200-C
- 36" x 72"
- Single Drive

Features

- (1) Coat 2-part Urethane Primer
- (1) Coat 2-part Urethane Paint
- Steel-shot blasted
- (2) Owner's manual for start-up and maintenance
- (2) Crank Down Landing Jacks
- Lifting Eyes

Options

- Switchgear
 - NEMA 4 Enclosure
 - Variable Frequency Drive

STRENGTH
YOU CAN DEPEND ON!

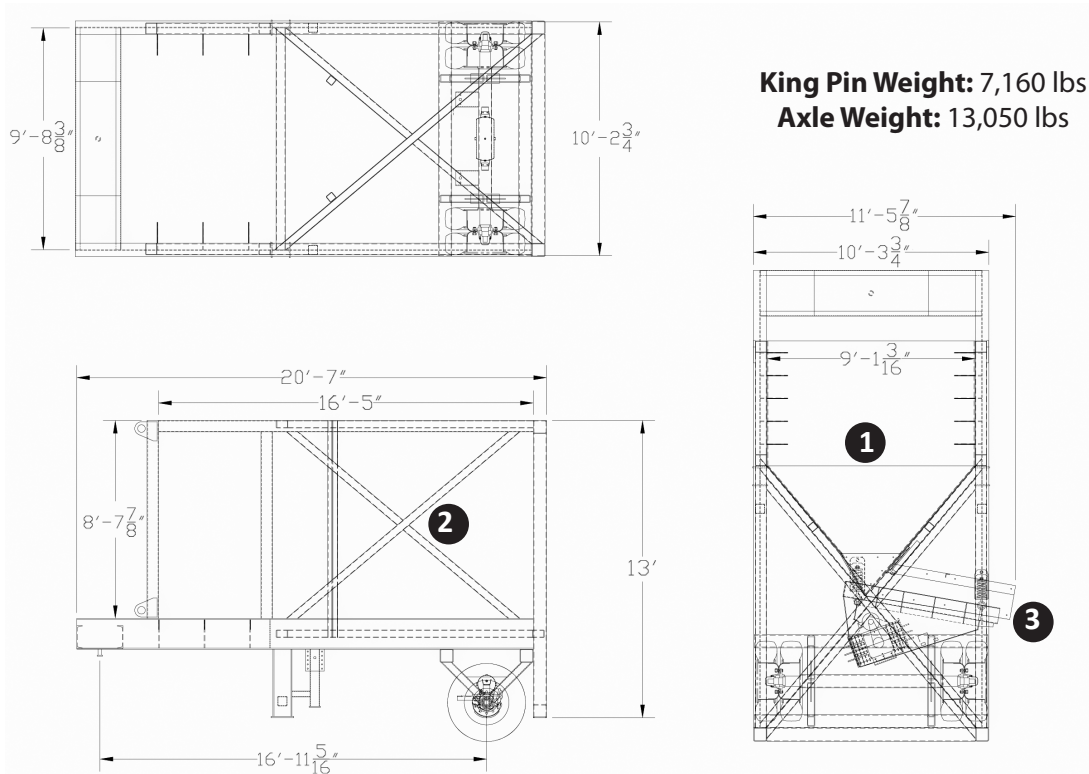
MASABA

1617 317th Street - PO Box 345, Vermillion, South Dakota 57069 USA, www.masabainc.com, 877-627-2220 or 605-624-9555

MASABA Portable 25 Ton Surge Bin

BENEFITS OF MASABA

The Masaba Portable 25 Ton Surge Bin combines Masaba toughness and mobility. This unit features a 22 cubic yard Hopper (1) supported by Heavy Duty Square Steel Tubing (2). Under the hopper sits a 36" x 72" Syntron Vibratory Feeder (3). Once in position, this portable surge bin easily tips into the upright, operational position.



NOTE: Listed weights are not exact. Actual weights will vary based on axle configuration, options, etc.



36" x 72" Syntron Vibratory Feeder



Wide Flange Beam Chassis



Steel Tubing Hopper Supports



MASABAinc.com
1-877-627-2220
info@MASABAinc.com

REVISION December 2013

NOTE: SPECIFICATIONS ARE SUBJECT TO CHANGE WITHOUT NOTICE: Because MASABA, Inc. may use in its catalog & literature, field photographs of its products which may have been modified by the owners, products furnished by MASABA, Inc. may not necessarily be as illustrated therein. Also continuous design progress makes it necessary that specifications be subject to change without notice. All sales of the products of MASABA, Inc. are subject to the provisions of its standard warranty. MASABA, Inc. does not warrant or represent that its products meet any federal, state, or local statutes, codes, ordinances, rules, standards or other regulations, including OSHA and MSHA, covering safety pollution, electrical, wiring, etc. Compliance with these statutes and regulations is the responsibility of the user and will be dependent upon the area and the use to which the product is put by the user. In some photographs, guards may have been removed for illustrative purposes only. This equipment should not be operated without all guards attached in their normal position. Placement of guards and other safety equipment is often dependent upon the area and the use to which the product is put. A safety study should be made by the user of the application, and, if required, additional guards, warning signs and other safety devices should be installed by the user, wherever appropriate before operating the products.